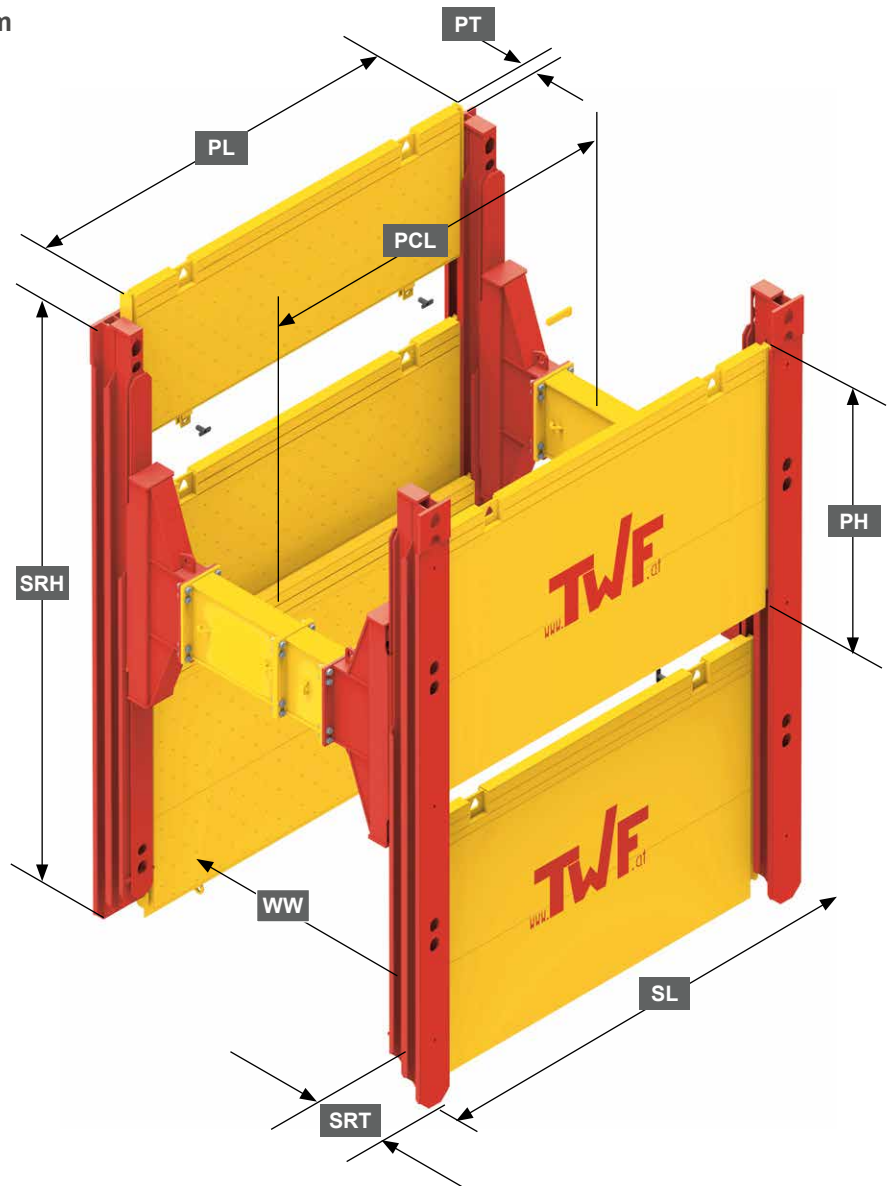


► TWF Trench Shoring Systems

■ Double Slide Rail Standard

- Slide rail panels in **two guide rails** - for **flexible use in several fields**
- Installation by **lower and cut method** in unstable soils - **easy dismantling**
- Crawler excavator: **24 - 31 t**
- Maximum trench depth: **6,20 m**
- Trench width: **1,99 - 8,99 m**
- Pipe clearance height: **2,95 m**



PL	Panel length
SRH	Slide rail height
WW	Working width
SRT	Slide rail thickness
SL	System length
PH	Panel height
PT	Panel thickness
PCL	Pipe clearance length

► For further information about slide rail panels see [page 28](#)



► Double Slide Rail

Element	Slide rail height SRH (m)	Weight (kg)	Slide rail thickness SRT (mm)	Char. system resistance
Slide rail	4,50	960	375	949,2 kNm
	5,50	1176		
	6,00	1266		
	6,50	1383		
Corner rail	4,50	810	430	130,9* kN/m
	5,50	957		

* Slide rail force each side



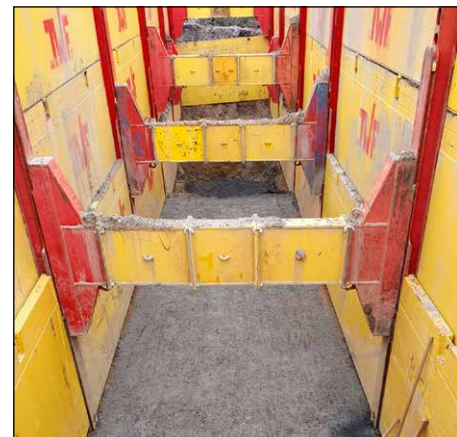
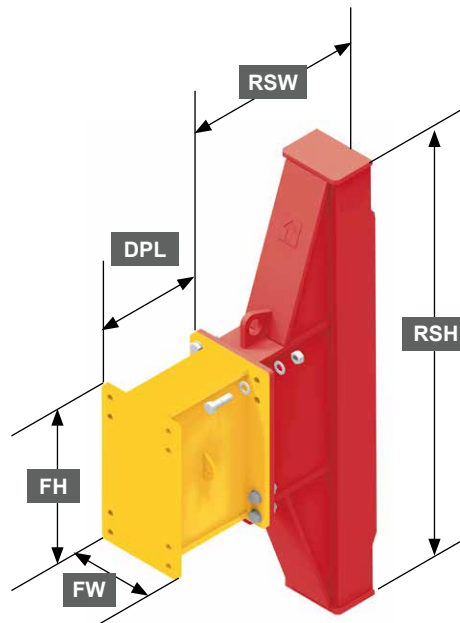
■ Rolling Strut Standard

RSH	Rolling strut height
RSW	Rolling strut width
DPL	Distance piece length
FH	Flange height
FW	Flange width

Rolling strut - Standard

Height RSH (m)	2,04
Width RSW (m)	0,50* 0,62
Flange width FW (mm)	405
Flange height FH (mm)	720
Weight / RS-pair (kg)	980
min. Working width WW (m)	1,24
max. Working width WW (m)	8,24

*Special sizes on request



Distance piece - Standard

Length DPL (m)	0,25	0,50	0,75	1,00	2,00	3,00
Weight (kg)	163	202	245	277	437	597

