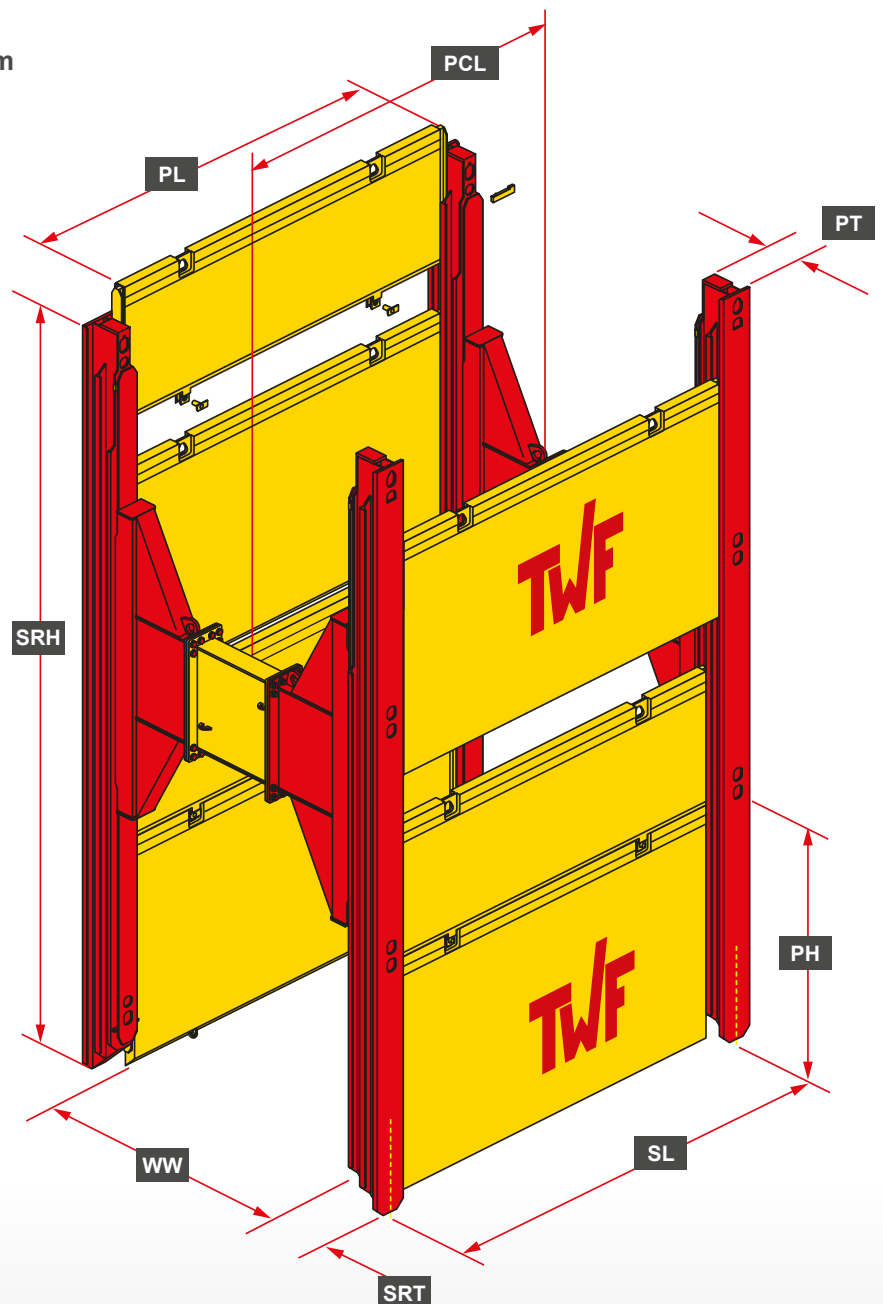


## ► Trench Shoring Systems

### | Double Slide Rail Shoring **XL** |

- Slide rail plates in **two guide rails** - for **flexible use in several fields**
- Installation by **lower and cut method** in unstable soils - **easy dismantling**
- Crawler excavator at depths up to 6,2 m: **24 - 31 t** | at depths from 6,2 m: **30 - 50 t**
- Maximum trench depth: **7,60 m**
- Trench width: **2,64 - 9,64 m**
- Pipe clearance height: **3,95 m**



PL	Plate length
SRH	Slide rail height
WW	Working width
SRT	Slide rail thickness
SL	System length
PH	Plate height
PT	Plate thickness
PCL	Pipe clearance length

► For further information about slide rail plates see [page 24](#)



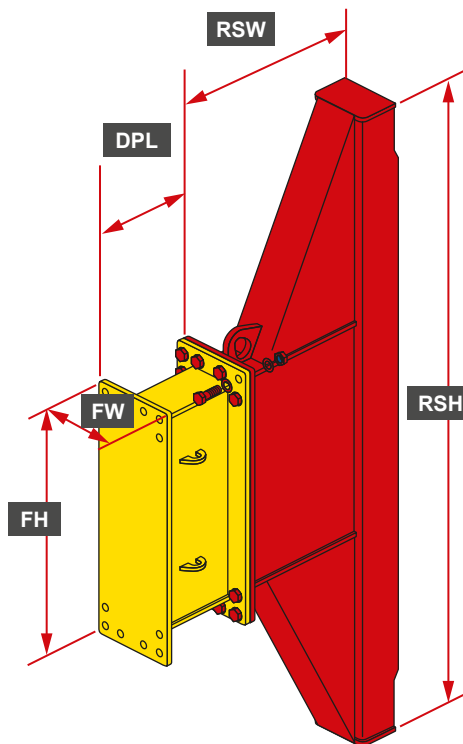
## ► Double Slide Rail Shoring

Element	Slide rail height SRH (m)	Weight (kg)	Slide rail thickness SRT (mm)	Char. System resistance
Slide rail	6,50	1418	405	949,2 kNm
	7,50	1636		
Corner rail	6,50	1188	430	130,9* kN/m
	7,50	1338		

\* Slide rail force each side

## Rolling Strut XL

RSH	Rolling Strut height
RSW	Rolling Strut width
DPL	Distance piece length
FH	Flange height
FW	Flange width



Rolling Strut - XL	
Height RSH (m)	3,04
Width RSW (m)	0,92
Flange width FW (mm)	405
Flange height FH (mm)	1220
Weight / RS-pair (kg)	1700
min. Working width WW (m)	1,83

Distance piece - XL						
Lenght DPL (m)	0,25	0,50	0,75	1,00	2,00	3,00
Weight (kg)	306	363	418	475	714	960

